

In-line SPD for Coaxial & RF Systems

SPT CP BNC

C1 • C2 • C3

IEC/EN Category: C1/C2/C3
 Protection: Impedance Matched
 Maximum Operating:
 Voltage: 70, 180, 280 V
 Maximum Peak Power: 40, 125, 300 W
 Frequency Range: DC – 2.6 GHz
 Surge Discharge Ratings: I_n : 10 kA, I_{max} : 20 kA
 Impedance: 50 Ω
 Insertion Loss: < 0.4 dB
 Return Loss: > 20 dB
 Termination: BNC Type (F-F, M-F)
 Housing: In-line Installation, Shielded Enclosure
 Compliance: IEC/EN 61643-21



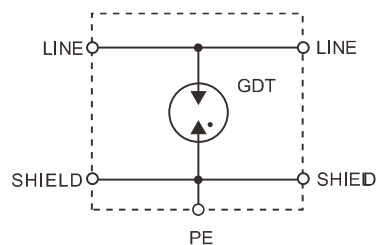
Technical Data

SPT CP BNC		70	180	280
IEC Electrical				
Maximum Continuous Operating Voltage	U _c	70V	180V	280V
Maximum Peak Power	P _{max}	40W	125 W	300W
C2 Nominal Discharge Current (8/20 μs)	I _n		10 kA	
Maximum Discharge Current (8/20 μs)	I _{max}		20 kA	
Residual Voltage at (1 kV/μs)	U _{res}	<600V	< 700V	<900V
Impedance	Z		50	
Insertion Loss	IL		<0. 4dB ,	
Return Loss	RL		>20dB	
Insulation Resistance of Protection	R _{iso}		>10GΩ	
Frequency Range	f _G		0-2.6 GHz	
Mechanical				
Temperature Range		-40 °F to +176 °F [-40 °C to +80 °C]		
Connection		BNC Female/Female		BNC Male/Female
Degree of Protection IEC/EN 60529		IP 20 (built-in)		
Housing Material		Metal		

Internal Configuration

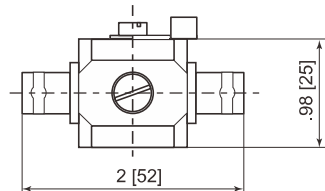
Legend

GDT Gas Discharge Tube
 PE Ground

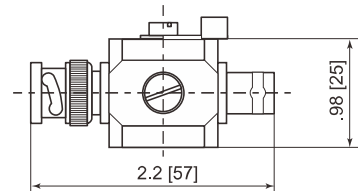


Dimensions & Packaging

SPT CP BNC-FF



SPT CP BNC-MF



SPT CP BNC

SPT CP BNC-FF-xxx

SPT CP BNC-MF-xxx

70 180 280

70 180 280

Dimensions & Packaging

Weight per Unit	3.74 oz [106g]	4.02 oz [114 g]
Packaging Dimensions (Single Unit)	2.9 × 1.2 × 1.2" [73 × 30 × 30 mm]	
Minimum Package Quantity	100 pieces	